

# PREAMBLE

.....  
*Annual General Meeting*







# PROFESSIONAL ASSOCIATION

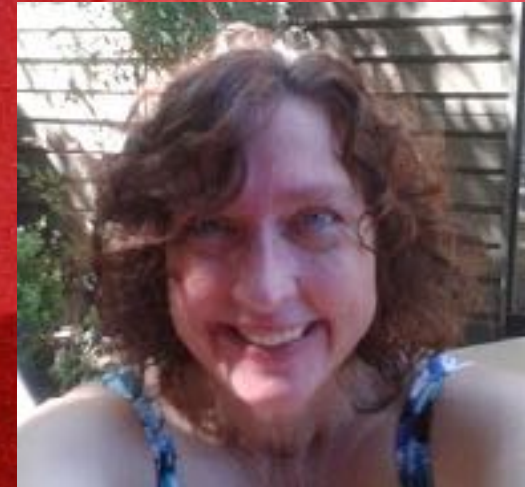
- .....
- Standards of Care
  - Professional Support
  - Education
  - Certification
  - Networking
  - Recognition

**PARTICIPATION.**

**INVOLVEMENT.**

**WE NEED YOU.**





# YOUR EXECUTIVE BOARD

---

*2016*

# CONSIDER

---

*A position on our Executive Board.*



# LEADERSHIP

.....  
*Opportunity*





**BE PROUD.**

---

*I am a PeriAnesthesia Nurse.*

**COMMENCE THE AGM!**





## ADDITIONS TO THE 2016 AGENDA:

- .....
- National Conference (NAPANc) is coming to British Columbia !
  - 2 Day Conference
  - June 2017
  - We need volunteers!





## 6. BOD POSITIONS - VOTED @ END OF THIS AGM

.....

➤ INTERESTED??? Raise your hand, state your name clearly.

➤ President

➤ President Elect

➤ President Past:

➤ Secretary

➤ Secretary Elect

➤ Treasurer

➤ Treasurer Elect

➤ Regional Advisors

➤ Scrutinizers





## PANBC 2016 CONFERENCE BURSARY

.....

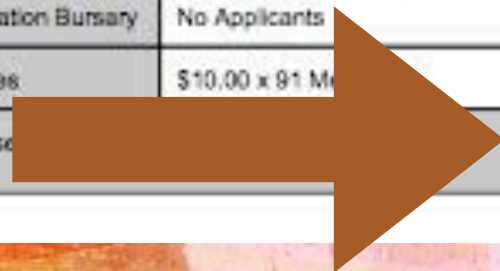
- Barbara Dickson
- Chrissy Brandt
- Jessica Neel
- Jackie Nahirney



# PANBC Financial Report

## EXPENSES

	Description	2016	2017 Budget Proposal
<b>ADMINISTRATION</b>			
Website	\$17.00 for Domain Mapping \$13.64 for Domain Name	\$30.64	\$30.64
PayPal Fees per Deposit	\$0.58 for \$15 x 2 \$1.03 for \$25 x 13 \$2.06 for \$60 x 4 \$2.77 for \$85 x 42 \$14.80 for \$500 x 7	\$1.17 \$13.39 \$8.24 \$116.34 \$103.60	\$242.74
TD Banking fees	\$19/month x 12 months	\$228.00	\$228.00
Incorporation Fee	Yearly	\$25.00	\$25.00
<b>CONFERENCE</b>			
Morgan Creek Golf Course (Food Cost, AV & Room Rentals, Speaker/Presenter Meals)	From 2015 Bill	\$5494.50	\$5300.00
Raffle Item Gifts	Basket Items Donations	\$145.98 0 0 0	\$250.00
Speaker Gifts (x6)	Wine Customized Truffle Oil	\$300.00 \$90.00	\$300.00
Promotional Items	Pens Badge Pulleys Notepads Banner	\$148.47 \$345.32 \$91.81 \$100.00	\$600.00
Stationary	Folders Labels	\$97.38 \$22.04	\$125
Speaker Fees	Volunteer Inspirational Speaker	\$0 \$0	\$0 \$0
Photographer	Dwight Simon Photography	\$200.00	\$0
Miscellaneous Expenses	Paper/Wrapping/Photocopying	\$400.00	\$100.00
Standards Door Prizes	For NAPANc Conference x 2	\$150.00	\$150.00
Provincial Bursary x 5	\$60.00 x 4 Recipients	\$240	\$300.00
CNA Certification Bursary	No Applicants	\$0	\$519.75
NAPANc Fees	\$10.00 x 91 M	\$910.00	\$910.00
<b>Total Expense</b>		<b>\$9261.88</b>	<b>\$ 9081.13</b>





# INCOME

	Description	2016	2017 Budget Proposal
<b>ADMINISTRATION</b>			
Membership Only	\$15 Cheque or Cash/member (1) \$14.41 PayPal/member (2) \$25 Cheque or Cash /member (2) \$23.97 PayPal/member (13)	\$15.00 \$28.82 \$50.00 \$311.61	\$405.43
Membership+Conference	\$85 Cheque or Cash/member (27) \$82.23 PayPal/member (42) \$60 Cheque or Cash/member (2) \$57.94 PayPal/member (4)	\$2295.00 \$3453.66 \$120.00 \$231.76	\$6100.42
Vendor Support	\$500 CDN x 6 \$500 USD x 1	\$3000.00 \$657.60	\$3657.60
		<b>Total 2016 Income</b>	<b>Projected 2017 Income</b>
		<b>\$10 163.45</b>	<b>\$10 163.45</b>

## 2016

2016 Income	Income	Expenses	2016 Balance
Balance from Dec. 7, 2015			\$9366.22
Conference Balance 2016	\$10163.45	- \$9261.88	\$901.57
<b>Projected Balance Post Conference Expenses 2016</b>			<b>2016 BANK BALANCE</b>
			<b>\$10 267.79</b>

## 2017

2017 Projected Budget	Income	Expenses	2016 Balance
Balance from Dec. 2016			\$10 267.79
Conference Balance 2017	\$10 163.45	- \$ 9081.13	\$1082.32
<b>Projected Balance Post Conference Expenses 2017</b>			<b>2017 BANK BALANCE</b>
			<b>\$11 350.11</b>





# BOD ELECTION

---

- INTERESTED???
- Raise your hand, state your name clearly.
- President
- President Elect
- Secretary
- Secretary Elect
- Treasurer
- Treasurer Elect
- Regional Advisors
- Scrutinizers